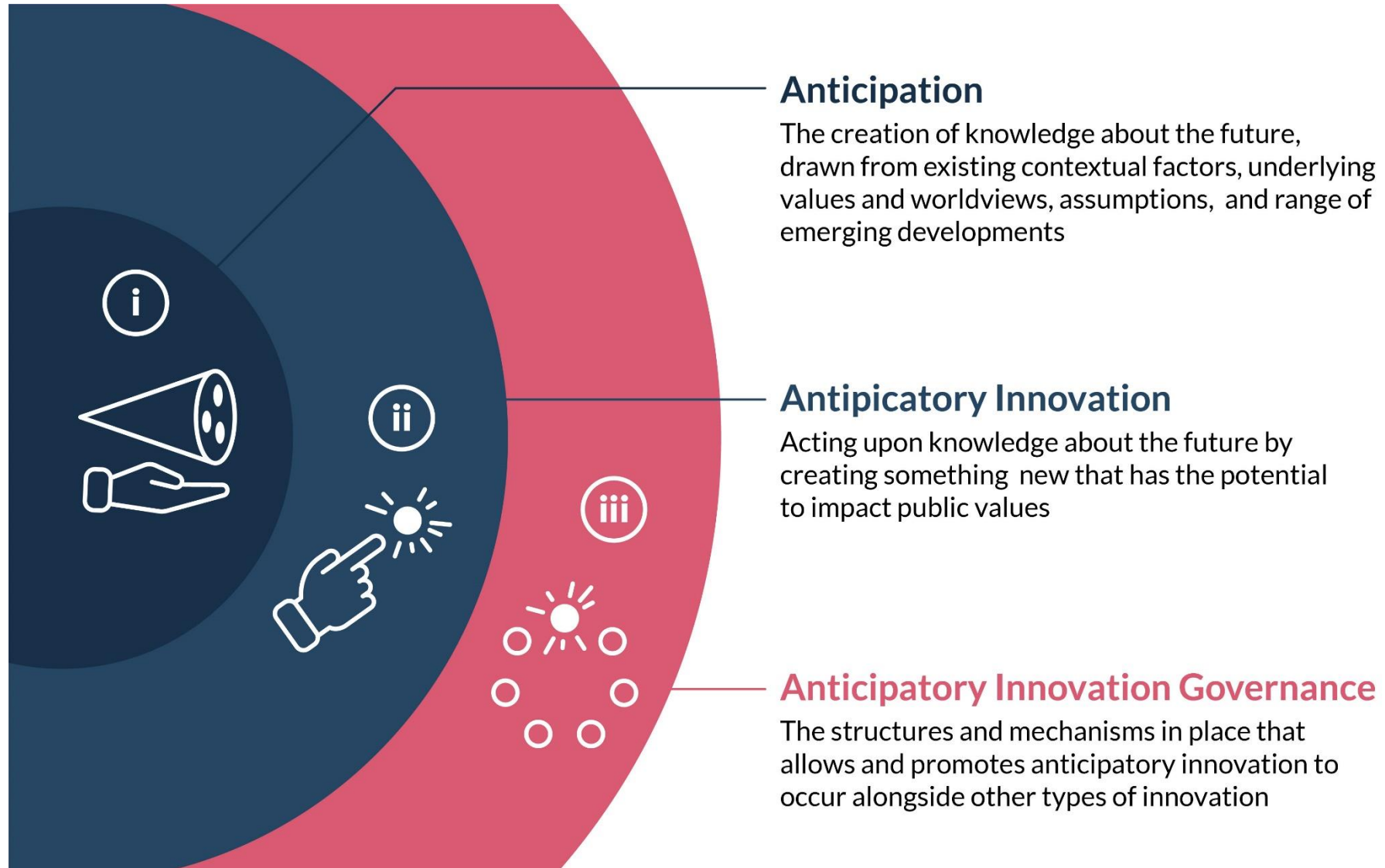


The background features a dark blue field with a faint grid of light blue lines. Overlaid on this are intricate, wavy patterns of red and blue lines that resemble topographic contour lines or a complex data visualization. The overall aesthetic is technical and futuristic.

**How to NOT to solve the
last crisis?**

Bridging the gap





Governance challenges to effectively managing risks

Many risks cut across policy areas, require expert knowledge, are associated with a large degree of uncertainty



Structural challenges

Silos, lack of steering capacity, path dependency, poor strategic foresight capacities



Human factors

Cognitive biases, lack of policy instruments, need for interdisciplinarity & critical dissent practices, lack of skills



Policy and political dimensions

Culture of risk avoidance, confidentiality of risk assessments, lack of intergenerational equity, lack of accountability



Public finances and budgetary processes

From *relief and recovery* to *readiness and resilience*

ONGOING WORK

